

# Explorer Pro<sup>®</sup> 170 / 230

The ultimate companion  
for any adventure



● Iceland Grey

## Rotax<sup>®</sup> 1630 ACE™ - 170 / 230

## ST3<sup>®</sup> Hull

## BRP Audio - Premium System

### CAPACITY

Rider Capacity	👤👤👤
Weight Capacity	600 lb / 273 kg
Rear Platform Capacity (without passenger)	221 lb / 100 kg
Fuel Capacity	18.5 US gal / 70 L
Glove Box	0.8 US gal / 2.9 L
Front Bin	25.3 US gal / 96 L
LinQ Explorer Bag	26.4 US gal / 100 L
Storage Capacity Total	52.3 US gal / 198.9 L*

### DIMENSIONS

Length (bumper to bumper)	146.8" / 373.4
Width	49.6" / 126 cm
Height	55.5" / 140 cm

### HULL

Type	ST3 Hull
Material	Fiberglass

### FEATURES

- Seat strap
- iBR<sup>®</sup> - Intelligent Brake & Reverse \*\*
- VTS™ (Variable Trim System)
- Boarding ladder
- RF D.E.S.S.™ key
- Direct-access front storage
- Watertight phone compartment
- LinQ<sup>®</sup> attachment system
- Wide angle mirrors
- Handle grips with palm rest
- Footwell carpets
- Large swim platform
- 1 LinQ front support
- Cupholder
- USB port
- Tilt steering
- Ski tow eye

ROTAX ENGINE	1630 ACE - 170	1630 ACE - 230
Horsepower	170 hp	230 hp
Intake System	Naturally aspirated	Supercharged with external intercooler
Displacement	1,630 cc	
Cooling	Closed-Loop Cooling System (CLCS)	
Reverse System	Electronic iBR	
Fuel Type	87 octane	
Throttle System	iTC™ (Intelligent Throttle Control)	
Exhaust System	D-Sea-Bel™ system	

### GAUGE

Type of Gauge	10.25 in. touchscreen display	
Main Functions	• BRP Connect	• Clock
	• Music	• VTS
iTC System - Mode	• Navigation	• Fuel consumption
	• Bluetooth <sup>®</sup> connectivity	• Fuel autonomy
	• Speedometer	• Depth finder
	• RPM	• Vehicle hours
iTC System - Mode	Eco <sup>®</sup> , Sport, Speed Regulator, Slow Speed & Accessory Mode	

### WEIGHT

Dry Weight	880 lb / 399 kg	917 lb / 416 kg
------------	-----------------	-----------------

### WARRANTY

BRP limited warranty covers the watercraft for one year.

\* Total storage capacity includes LinQ Explorer bag. \*\*Electronic brake, neutral and reverse.

# SEA-DOO<sup>®</sup>

**What's New**

- 10.25 in. touchscreen display

**Key Features**

- iDF - Intelligent Debris-Free System
- Touring windshield
- Heavy-duty grab handles
- Adjustable handlebar riser
- Explorer Touring seat and knee pads
- Gunwale footrests
- LinQ Multi Cargo Rack
- LinQ Explorer bag
- Rear deck extension
- Hydraulic steering damper



● Iceland Grey

**Feature Highlights**



**Touring Windshield**

An industry first that reduces noise and fatigue associated with prolonged wind pressure while also protecting against splashing and salt water exposure when riding offshore.



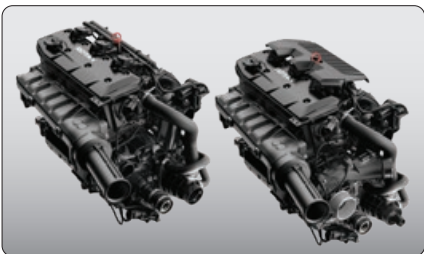
**Extended Riding Comfort**

With extended riding duration in mind, the Explorer Touring seat and knee pads, adjustable riser handlebars and gunwale footrests provide ultimate extended riding comfort.



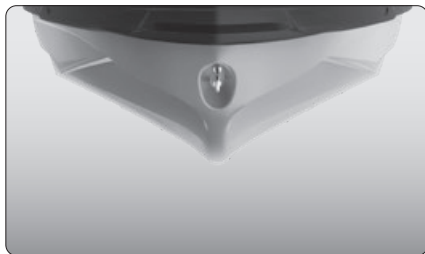
**LinQ Explorer Bag**

Keep extra gear dry and easily accessible with this 100 L (26.4 gal) bag. This exclusive LinQ compatible accessory is waterproof, functional and portable. It can be stacked on the LinQ plate/LinQ accessories or carried as a backpack.



**Rotax 1630 ACE - 170 / 230 Engines**

Two engine options: the 170 hp boasts naturally aspirated punch with optimal fuel economy, or opt for the 230 hp engine with a supercharger and external intercooler, optimized to run on regular fuel.



**ST3 Hull**

An innovative hull that sets the benchmark for rough water handling, stability, and offshore performance.



**Rear Deck Extension with LinQ Attachment System**

Adds 11.5 inches to the back of the watercraft to increase stability, space, and storage capability. Enhance your storage capacity with the LinQ Multi Cargo Rack.<sup>1</sup>

<sup>1</sup> Accessories not included.

